



Puts therapy in a different light

Philips BiliTx phototherapy system for hospital and homecare

As part of the Philips Integrative Developmental Care approach to treating fragile infants,¹ we provide phototherapy that is clinically versatile and effective for all care settings through the BiliTx phototherapy system and related products. This developmentally friendly approach for infants with hyperbilirubinemia provides optimal irradiance through a blue LED light source and fiber optic panel. Used in the bassinet or during kangaroo care to promote parent-infant bonding, BiliTx may be used in the hospital or home.

* American Academy of Pediatrics (AAP), European Society for Paediatric Research (ESPR), U.K. National Institute for Health and Clinical Excellence (NICE).

Key advantages

- Supports Integrative Developmental Care, allowing bonding during phototherapy
- Offers excellence in clinical care, meeting and exceeding phototherapy guidelines issued by globally renowned medical associations*
- Potentially reduces hospital readmissions by providing therapy from hospital to home

PHILIPS
sense and simplicity

The light that heals and supports the bonding touch

The BiliTx phototherapy system places effective light therapy in the hands of clinicians and parents while supporting Integrative Developmental Care in any care setting.

Versatile and effective therapy in the clinical setting

BiliTx's high intensity blue LED light, low maintenance cost, and ease of use make it a reliable and effective phototherapy choice for the well-baby nursery, NICU and pediatrics.

BiliTx can be used alone or combined with conventional overhead lights to provide dual-surface phototherapy for the most severe hyperbilirubinemia cases.



BiliTx can be used in any hospital setting, including with warmers or bassinets.

“We worked with a local hospital to reduce their readmission rate for hyperbilirubinemia by providing home phototherapy using the BiliTx. After six months, none of the newborns with BiliTx home phototherapy were readmitted. The intervention also reduced the time moms and their babies had to be separated because of hospitalization.”

Jay Diaz, Site Manager, Helping Hands Medical Supply²

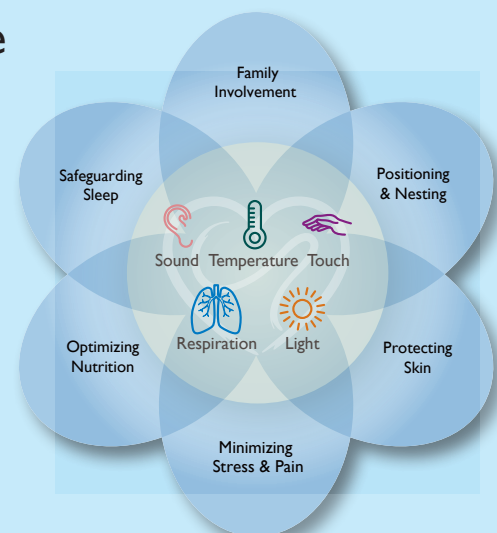
Committed to Integrative Developmental Care

This evidence-based framework for developmental care provides clinicians with innovative solutions designed especially to support and nurture each mother and baby.

- The BiliTx phototherapy system promotes family involvement by allowing kangaroo care so that infants and parents can bond through touch during treatment

- Panel therapy does not require the use of goggles, helping to minimize stress and pain through eye contact and visual stimulation
- The blue LED technology delivers cool phototherapy, providing the infant with a stable thermal environment²

For more information, please visit www.philips.com/developmentalcare



Convenient, reliable and easy to use in the home

With BiliTx’s one-button operation and no-maintenance technology, parents will find treating their infant’s hyperbilirubinemia at home to be easy and reliable. BiliTx’s small size and light weight make the device easy to carry, transport and store.

BiliTx is versatile and fits easily into a mother’s or caregiver’s hand while delivering treatment. Its parent-friendly sling, fiber optic panel and long cord make it easy to nurse, hold and even carry the baby without interrupting phototherapy.

- Blue LED light source delivers bulb life of up to 50,000 hours
- Choice of 2 panel sizes to treat term and premature infants
- Compact design is lightweight at less than 3 lbs.

“I wanted to switch to the BiliTx for several reasons. . . The low upkeep, no light bulbs to change, easy clean up. The user friendliness of this unit make it so much nicer for Mom and baby bonding. It’s just a very impressive unit. It is light and easy to move from room to room. It doesn’t get hot, no settings to worry about and the baby seems comfortable on the panel.”

Bradley Norg RRT, Clinical Director, Airway Oxygen, Inc.



Parent-friendly sling, fiber-optic panel, and long cord make it easy to nurse, hold, and even carry the infant without interrupting phototherapy.

American Academy of Pediatrics guidelines for phototherapy^{3,4}

Guideline	BiliTx meets/exceeds	BiliTx Features
Wavelength spectrum within the ~ 460-490 nm (blue-to-green) range for maximal skin penetration and bilirubin absorption	✓	Blue LED with peak wavelength between 450nm and 485nm offers intensive phototherapy without harmful UV or heat output
Irradiance of at least 30 μW/cm ² /nm	✓	Neonatal fiber-optic panel: 90 μW/cm ² /nm* Wraparound fiber-optic panel: 40 μW/cm ² /nm*
Maximal irradiance achieved by bringing the light source close to the infant	✓	Fiber-optic panel blankets the infant with therapy
Therapy delivered to as much of the infant’s surface area as possible	✓	Two sizes of panels provide coverage for premature and full-term infants
Promote and support successful breastfeeding	✓	System design supports bonding and breast-feeding during treatment

* Measured with the Joey dosimeter (JD-100).

BiliTx specifications

Size	<ul style="list-style-type: none"> • Illuminator: 16.1 cm x 7.4 cm (6.34 in. x 2.92 in.) • Neonatal fiber-optic panel: 12.7 cm x 17.78 cm (5 in. x 7 in.) • Wraparound fiber-optic panel: 10.16 cm x 38.1 cm (4 in. x 15 in.)
Weight	1.3 kg (2.86 lbs.)
Spectral irradiance level	<ul style="list-style-type: none"> • Neonatal fiber-optic panel: 90 $\mu\text{W}/\text{cm}^2/\text{nm}^*$ • Wraparound fiber-optic panel: 40 $\mu\text{W}/\text{cm}^2/\text{nm}^*$
Wavelength	Peak between 450 nm and 485 nm
Sound level	52 dB
Electrical	(Input) 100-240 VAC, 50/60 Hz, 1.0 A
Operating temperature	15°C to 35°C
Storage temperature	-20°C to 55°C

* Measured with the Joey dosimeter (JD-100).

BiliTx phototherapy

System Packages - U.S. and Canada only

7 digit PN	12 Digit PN	Description
1052425	989805642321	BiliTx package with wraparound panel
1052425	989805642331	BiliTx package with neonatal panel
1052931	989805644891	BiliTx with North American power cord and over-the-shoulder bag

7 digit PN	12 Digit PN	Description
1041725	989805605191	BiliTx light source
EG-2000	989805623991	Wraparound Evenglo Fiberoptic Panel
EG-2000N	989805624001	Neonatal Evenglo Fiberoptic Panel
1044167	989805605241	BiliTx Over The Shoulder Bag
MD-510	989805627141	Disposable covers, standard panel, 50/case
MD-610	989805627151	Disposable covers, neonatal panel, 100/case
1047505	989805605531	BiliTx Phototherapy Case

Joey dosimeter

7 digit PN	12 Digit PN	Description
JD-100	989805608781	Joey dosimeter

Complements to our BiliTx phototherapy system

WeeSpecs Supreme phototherapy mask

Innovative materials combined with recessed goggles provide light-blocking capabilities to produce a phototherapy mask designed to fit even the smallest babies.

BilEclipse phototherapy patch

For our BiliChek customers, the BilEclipse patch isolates a section of skin before, during and after phototherapy so transcutaneous bilirubin measurements can be taken with BiliChek.



WeeSpecs Supreme phototherapy mask.



BilEclipse phototherapy patch.

Protection for your investment

Extended warranty, service and accident protection plans are available from Philips Children's Medical Ventures.

Contact your sales representative for more information.

1. Altmier L. Mother and child integrative developmental care model: a simple approach to a complex population. *Newborn and Infant Nursing Reviews*. 2011;11(3).
2. Hyperbilirubinemia in Newborns: A CNS-Led Evidence-Based Practice Initiative to Reduce Risks and Hospital Readmissions. Marianne Allen, MN, RNC-OB; Patricia Maurer, MSN, MBA, RNC-MNN; Megan Strohecker, BSN, RNC-MNN.
3. Bhutani VK; Committee on Fetus and Newborn; American Academy of Pediatrics. Phototherapy to prevent severe neonatal hyperbilirubinemia in the newborn infant 35 or more weeks of gestation. *Pediatrics*. 2011 Oct;128(4):e1046-52. Epub 2011 Sep 26.
4. Subcommittee on Hyperbilirubinemia. Management of Hyperbilirubinemia in the Newborn Infant 35 or More Weeks of Gestation. *Pediatrics*. 2004; 114; 297-316.

Please visit www.philips.com/motherandchild



© 2012 Koninklijke Philips Electronics N.V.
All rights are reserved.

Philips Healthcare reserves the right to make changes in specifications and/or to discontinue any product at any time without notice or obligation and will not be liable for any consequences resulting from the use of this publication.

Philips Healthcare is part of Royal Philips Electronics

www.philips.com/healthcare
healthcare@philips.com

Printed in The Netherlands
4522 962 88681 *AUG 2012